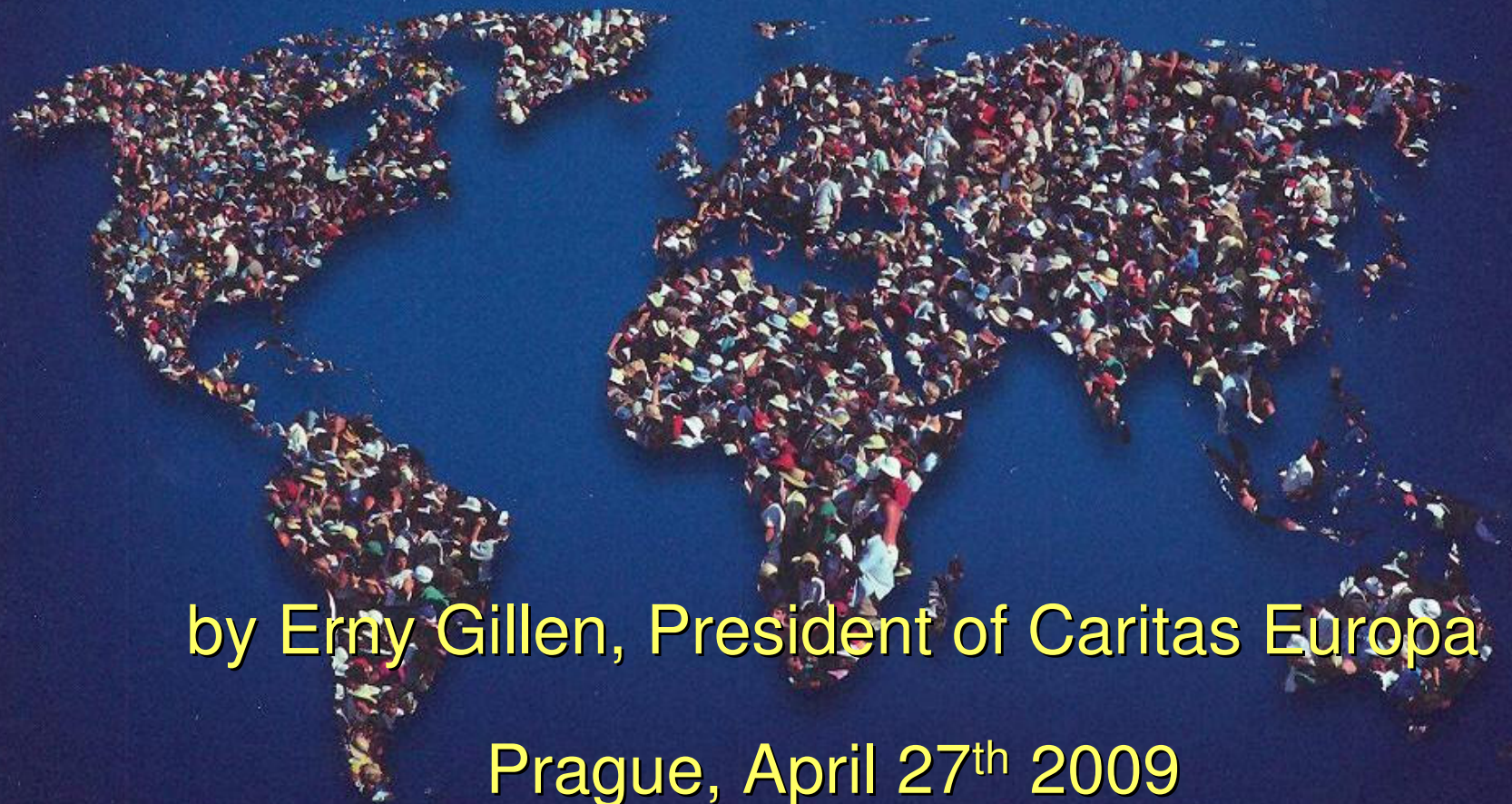


One crisis may hide another



by Erny Gillen, President of Caritas Europa

Prague, April 27th 2009



A photograph of a high-speed train on tracks, with a white banner overlaying the text "Financial crisis". The banner is curved and has a slight shadow, giving it a 3D appearance. The background shows the train tracks, gravel, and overhead power lines under a clear blue sky.

Financial crisis

Bankruptcy Lehman Brothers



Northern Rock



Bradford & Bingley



Hypo Real Estate



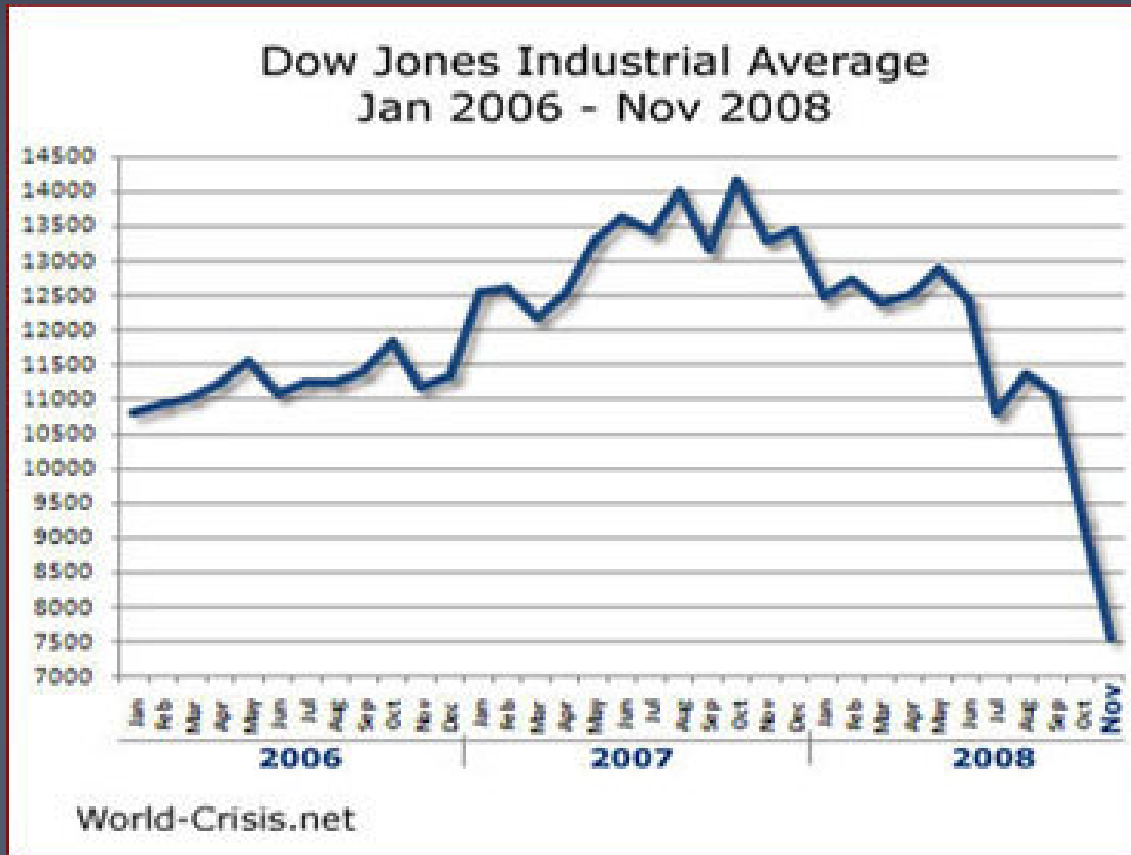
Fortis



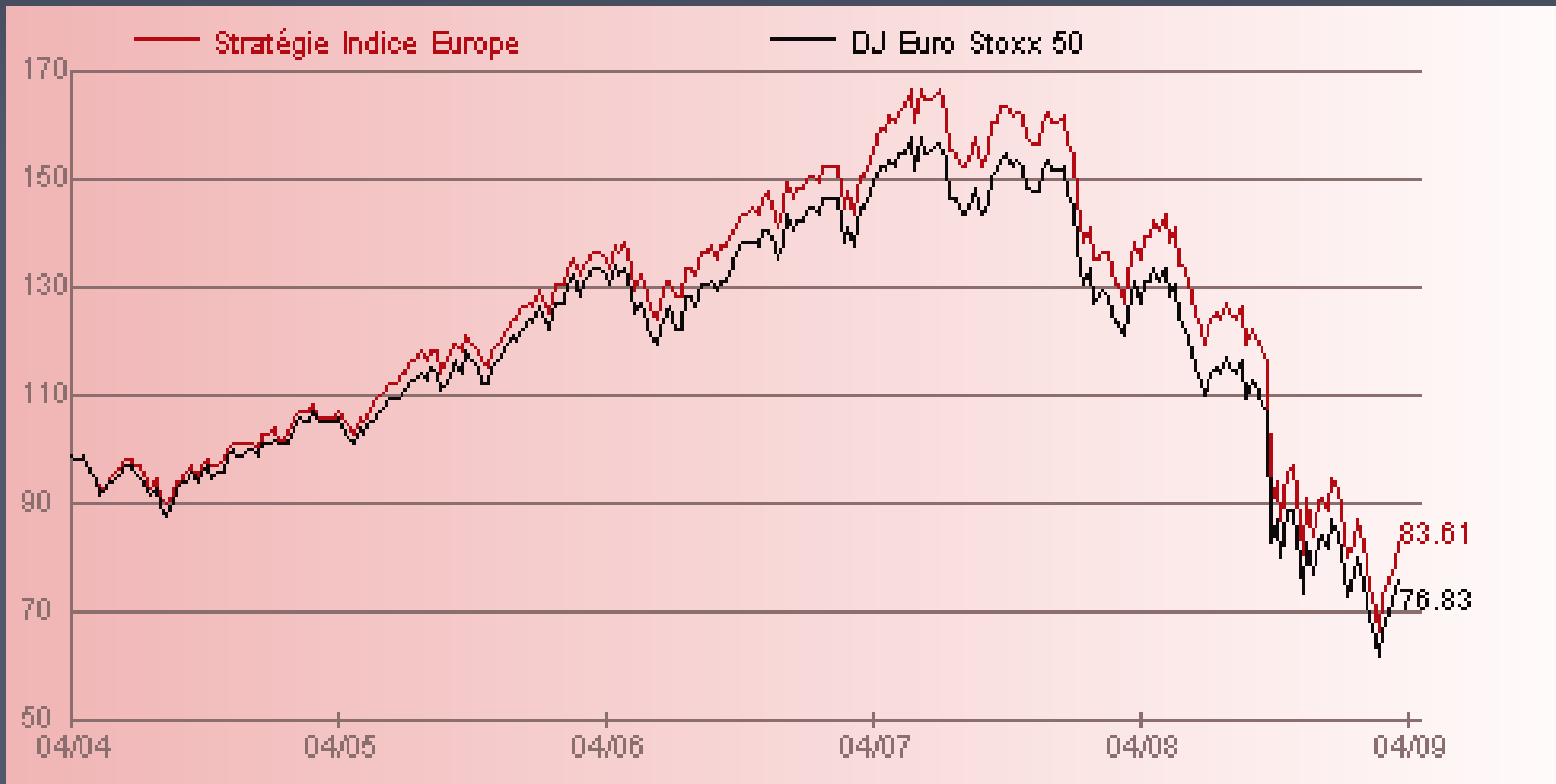
Dexia



Dow Jones evolution



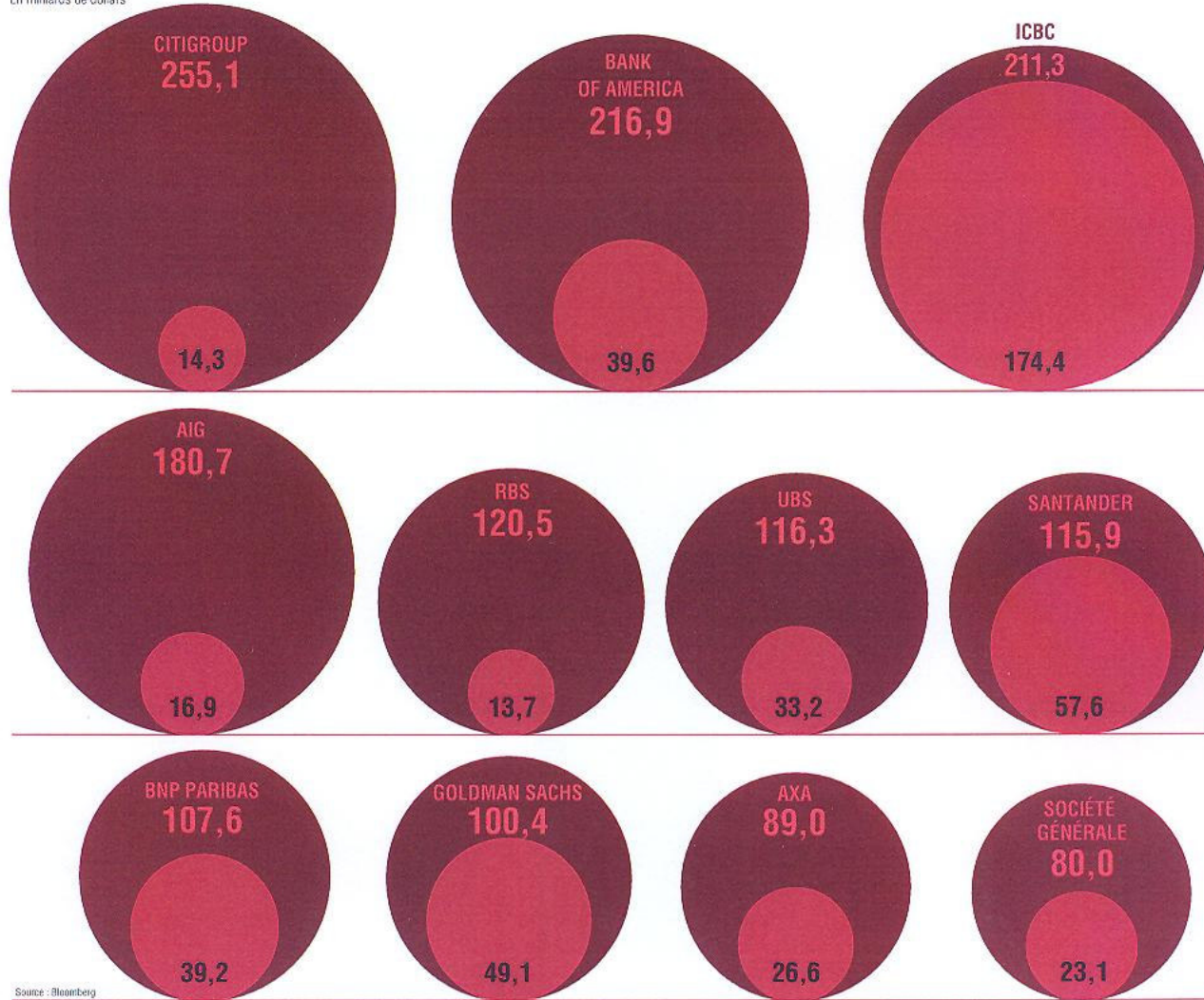
Euro Stoxx evolution



La finance après le choc

La violence de la tempête financière se lit dans l'effondrement de la valeur boursière des grands groupes bancaires.

● 30 JUIN 2007 ● 20 MARS 2009
En milliards de dollars



Source : Bloomberg



Economic crisis

Car industry

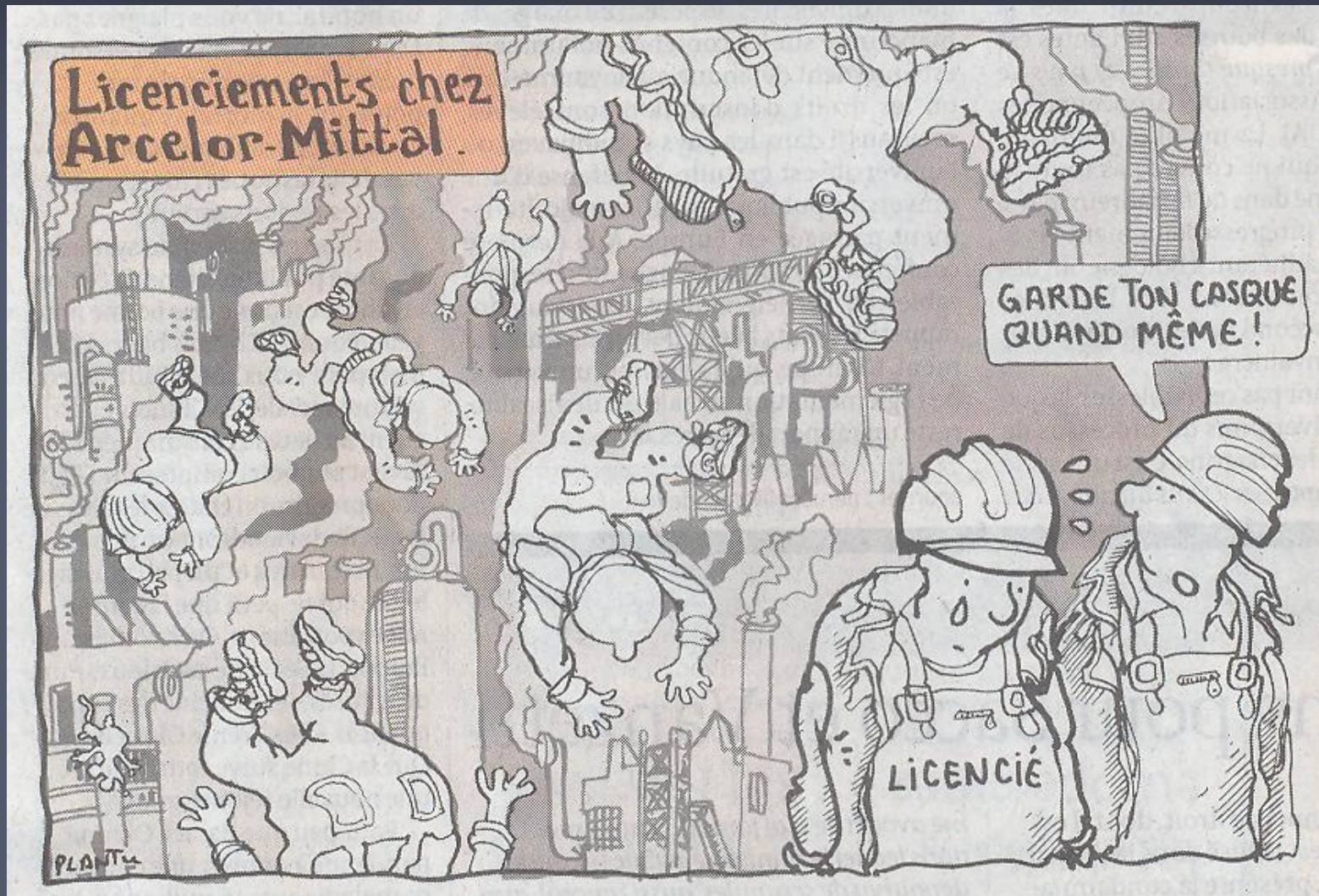


Villeroy & Boch

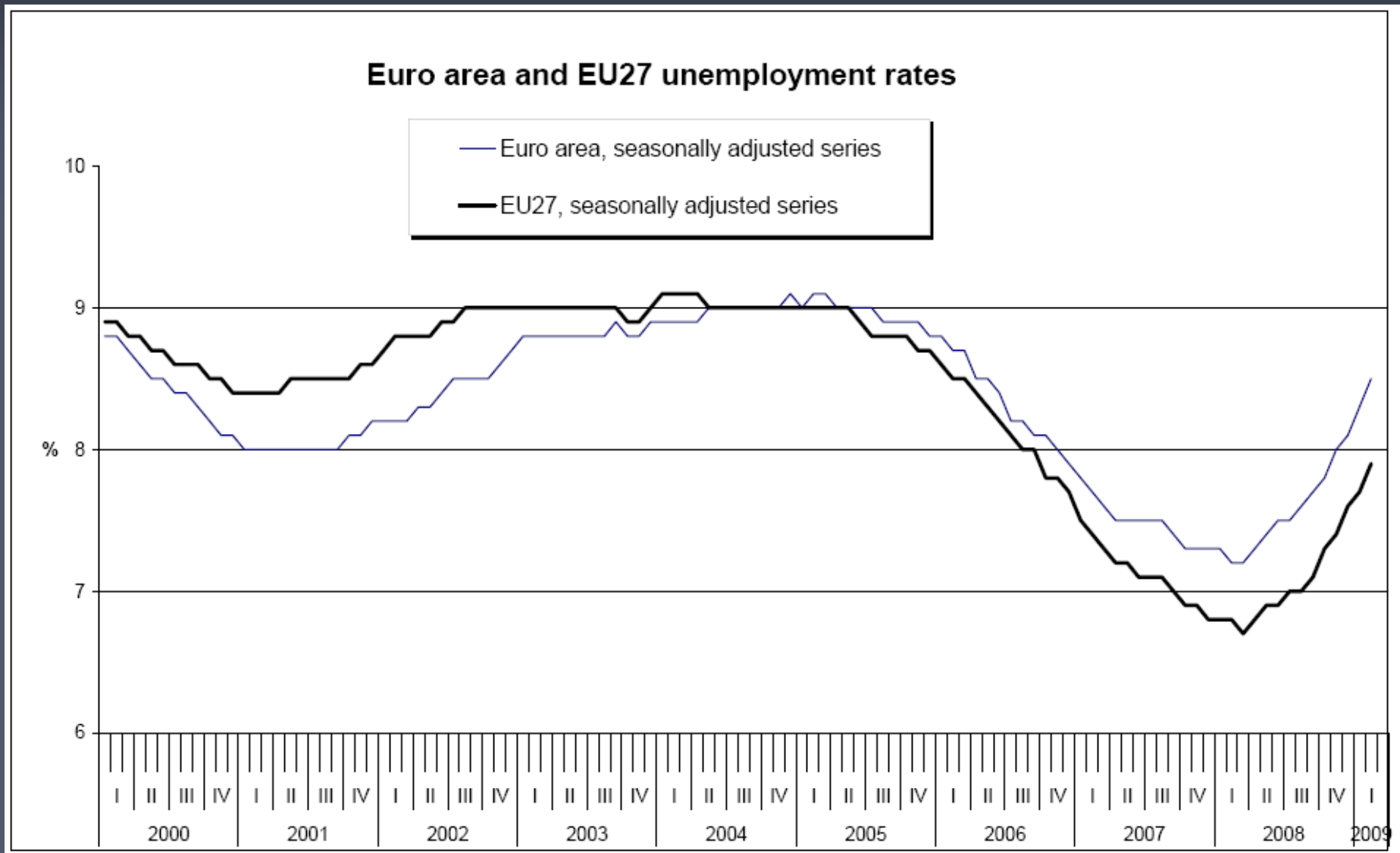


swp.de

ArcelorMittal



Unemployment rate

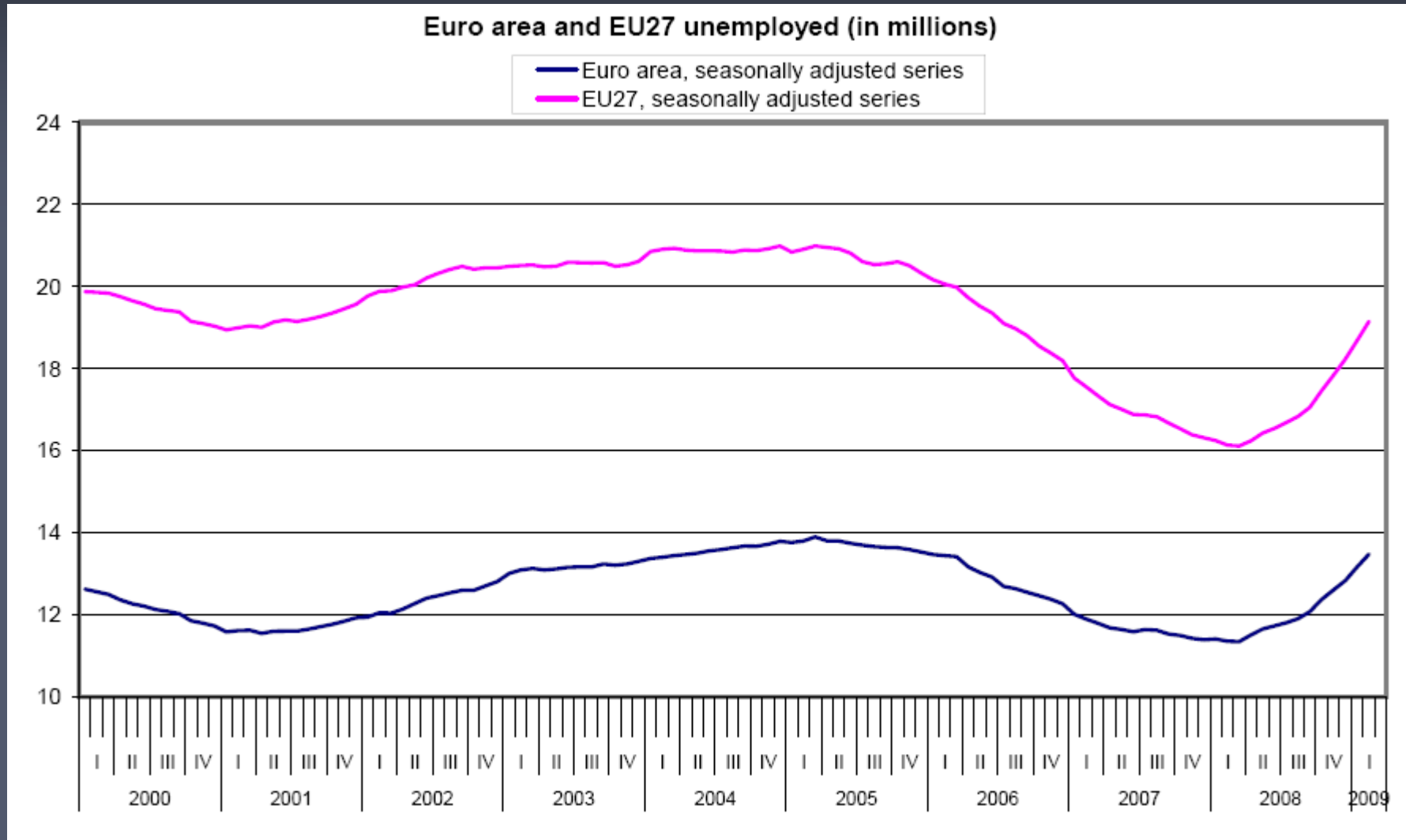


Unemployment rate

SEASONALLY ADJUSTED UNEMPLOYMENT RATES (%) TOTALS

	Feb 2008	Aug 2008	Sept 2008	Oct 2008	Nov 2008	Dec 2008	Jan 2009	Feb 2009
EA16	7.2	7.6	7.7	7.8	8.0	8.1	8.3	8.5
EU27	6.8	7.0	7.1	7.3	7.4	7.6	7.7	7.9
BE	7.0	7.4	7.2	7.1	6.9	6.8	7.0	7.1
BG	6.2	5.3	5.2	5.1	5.0	5.3	5.3	5.5
CZ	4.5	4.3	4.3	4.4	4.5	4.6	4.9	4.9
DK	3.1	3.3	3.4	3.6	3.8	4.1	4.4	4.8
DE	7.6	7.2	7.1	7.1	7.1	7.2	7.3	7.4
EE	4.1	6.4	6.8	6.9	7.4	8.4	9.1	9.9
IE	4.8	6.6	7.1	7.6	8.2	8.7	9.3	10.0
EL ⁴	7.8	7.5	7.5	7.8	7.8	7.8	:	:
ES	9.3	11.7	12.3	13.1	13.8	14.3	14.8	15.5
FR	7.6	7.8	7.9	8.0	8.2	8.3	8.5	8.6
IT ⁴	6.6	6.7	6.7	6.9	6.9	6.9	:	:
CY	3.7	3.7	3.8	3.8	3.9	4.2	4.3	4.5
LV	6.1	7.5	8.1	9.2	10.3	11.4	13.0	14.4
LT	4.4	6.4	6.5	7.2	8.3	9.7	11.6	13.7
LU	4.4	5.0	5.1	5.1	5.3	5.5	5.7	5.9
HU	7.6	7.8	7.8	7.8	8.1	8.4	8.4	8.7
MT	5.9	5.9	5.7	5.9	6.1	6.0	6.3	6.4
NL	2.8	2.7	2.7	2.7	2.7	2.7	2.7	2.7
AT	3.9	3.8	3.9	4.0	4.1	4.2	4.3	4.5
PL	7.6	6.9	6.8	6.8	6.9	7.0	7.1	7.4
PT	7.7	7.8	7.8	7.8	7.9	8.0	8.1	8.3
RO ⁴	5.8	5.7	5.7	5.8	5.8	5.8	:	:
SI	4.6	4.3	4.1	4.2	4.2	4.1	4.3	4.6
SK	10.2	9.1	9.0	9.0	9.1	9.2	9.5	9.8
FI	6.3	6.5	6.5	6.5	6.6	6.6	6.7	6.8
SE ⁵	5.9	6.1	6.4	6.7	7.0	7.0	7.2	7.5
UK	5.1	5.8	5.9	6.1	6.3	6.4	:	:
NO	2.5	2.4	2.5	2.8	2.9	3.0	3.1	:
US	4.8	6.2	6.2	6.6	6.8	7.2	7.6	8.1
JP	3.9	4.1	4.0	3.8	4.0	4.3	4.2	4.4

Unemployment rate



A photograph of a high-speed train on tracks, with a white banner overlaying the text "Societal crisis". The train is white and blue, and the tracks are gravel and steel. The background shows power lines and a clear sky.

Societal crisis



Des ouvriers de l'usine auxerroise de Fulmen, un fabricant de batteries, ont forcé leur directeur (au centre) à manifester avec eux le 29 janvier. LUDOVIC BERGER/« L'YONNE RÉPUBLICAINE »





Risks of the crisis

Poverty



Risks of the crisis

Social cohesion



Risks of the crisis

Political stability



Risks of the crisis



A photograph of a high-speed train on tracks, viewed from a low angle. The train is white and blue, and is positioned on a set of tracks with gravel ballast. The background shows a clear blue sky and overhead power lines. A large, white, wavy banner is superimposed over the center of the image, containing the text 'Systemic measures' in a bold, black, sans-serif font.

Systemic measures

Fighting the crisis with the means leading to the crisis

- Recapitalization of banks: 260 Mia. €
- State guaranties for banks: 3.000 Mia. €
- Subsidies for industries: ???
- Request for trust and confidence: High consumption

Some figures of the G20 summit

- \$ 500 bn for the IMF to lend to struggling economies
- \$ 250 bn to boost world trade
- \$ 250 bn for a new IMF "overdraft facility" countries can draw on
- \$ 100 bn that international development banks can lend to poorest countries
- IMF will raise \$ 6 bn from selling gold reserves to increase lending for the poorest countries

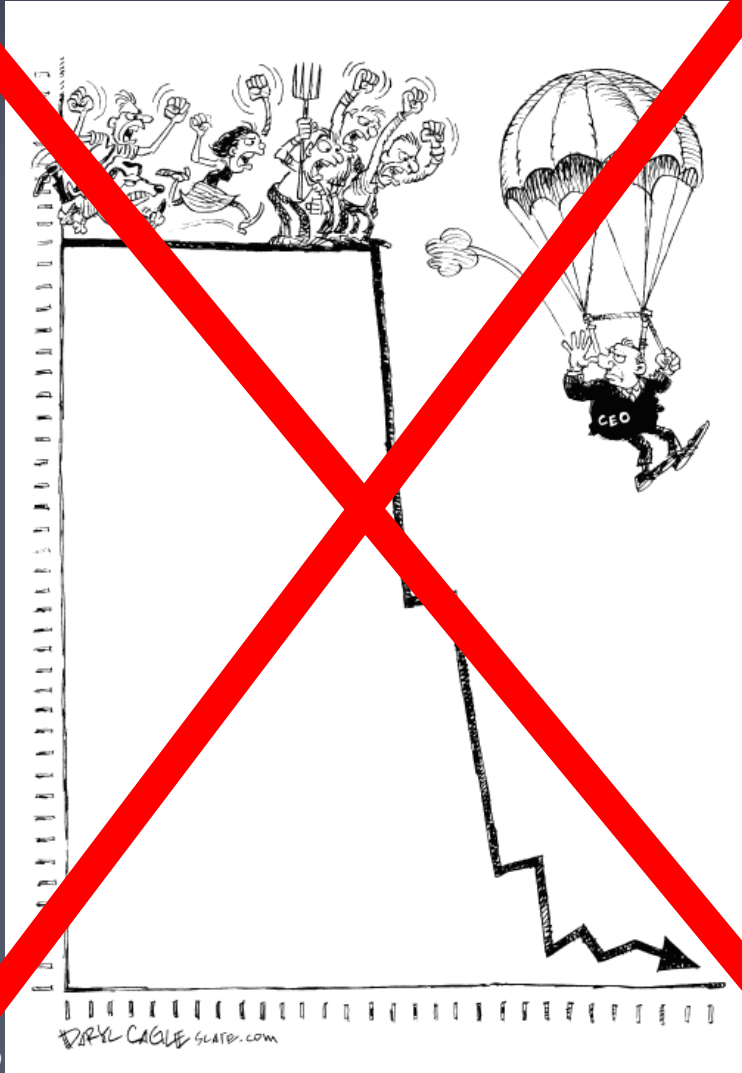
Source: BBC

A photograph of a high-speed train on tracks, with a white banner overlaying the text "Ethical antidots". The banner is curved and has a slight shadow, giving it a 3D appearance. The background shows the train tracks, gravel, and overhead power lines under a clear blue sky.

Ethical antidots

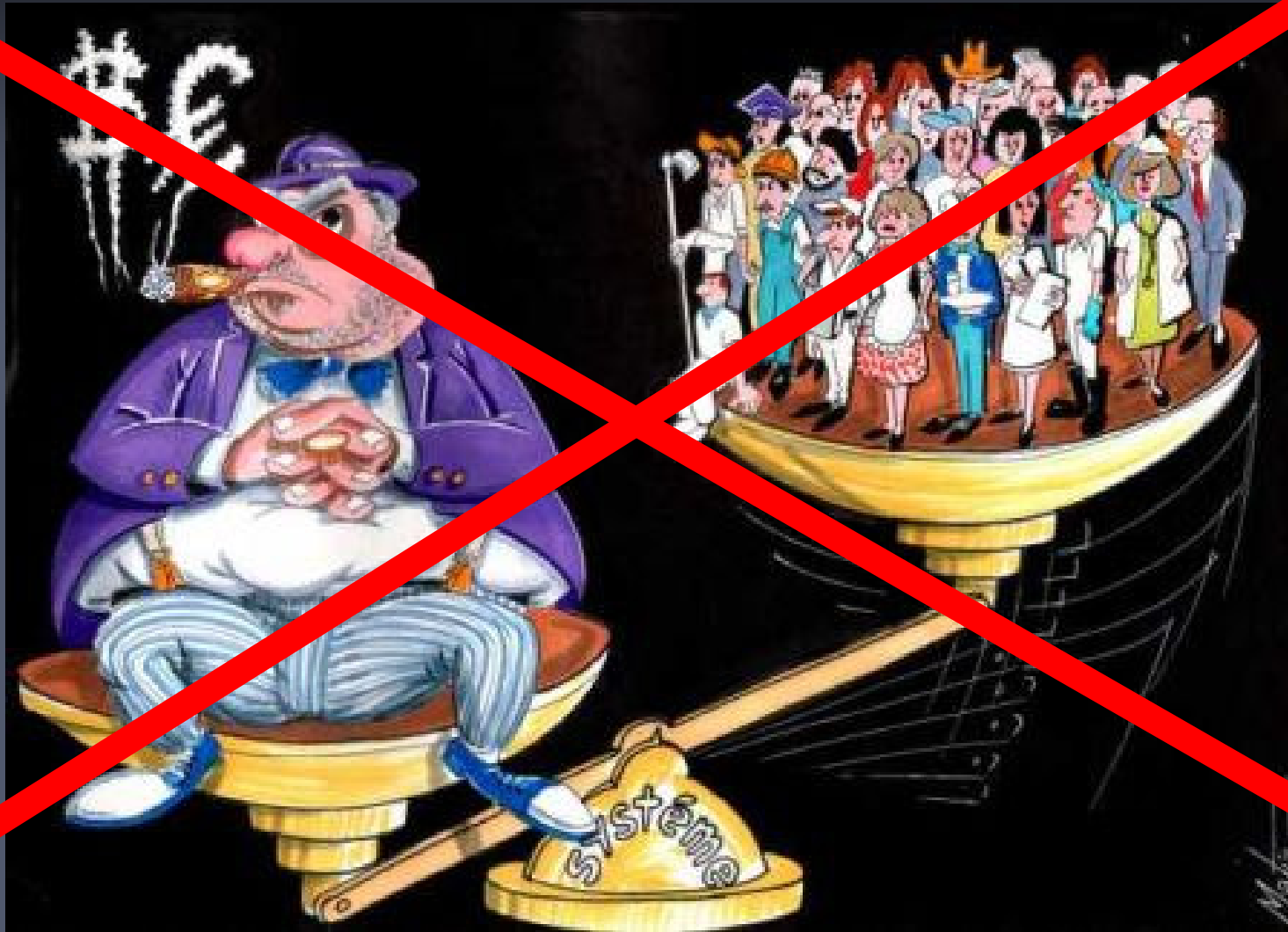


Compensation for managers (golden parachute)



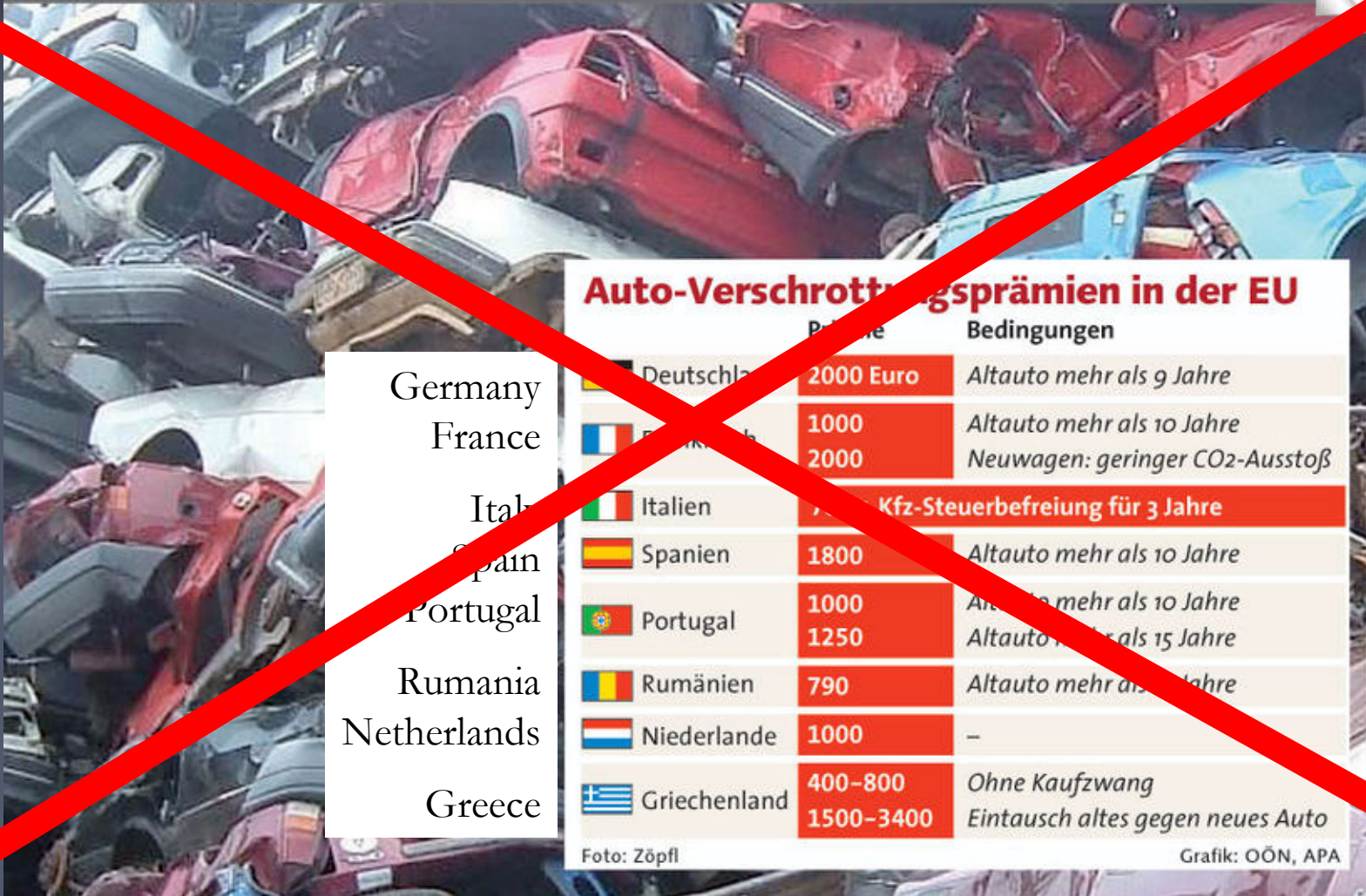
Quelques parachutes en or [modifier]

Année	Personne	Pays	Société	Montant global
1989	F. Ross Johnson	 États-Unis	Reynolds Tobacco Company	58 millions US dollars ¹
2002	Jean-Marie Messier	 France	Vivendi Universal	20,5 millions euros ³
2003	Philippe Jaffré	 France	Elf	10 millions euros ⁴
2003	Pierre Bilger	 France	Alstom	4,1 millions euros ³
2005	Carly Fiorina	 États-Unis	Hewlett-Packard	10 millions US dollars ⁵
2005	Daniel Bernard	 France	Carrefour	38 millions euros ³
2006	Noël Forgeard	 France	FNAC	8,5 millions euros ⁶
2007	Serge Tchuruk	 France	Alcatel	5,7 millions euros ⁶
2007	Antoine Zacharias	 France	Vinci	13 millions euros ⁶
2008	Patricia Russo	 France	Alcatel	6 millions euros ⁷
2009	Fred Goodwin	 Royaume-Uni	Royal Bank of Scotland	650 000 livres (726 000 euros) de retraite annuelle <small>[réf. nécessaire]</small>



Crash primes for cars

OÖN GRAFIK



Auto-Verschrottungsprämien in der EU

	Prämie	Bedingungen
Deutschland	2000 Euro	Altauto mehr als 9 Jahre
Frankreich	1000 2000	Altauto mehr als 10 Jahre Neuwagen: geringer CO2-Ausstoß
Italien	700	Kfz-Steuerbefreiung für 3 Jahre
Spanien	1800	Altauto mehr als 10 Jahre
Portugal	1000 1250	Altauto mehr als 10 Jahre Altauto mehr als 15 Jahre
Rumänien	790	Altauto mehr als 10 Jahre
Niederlande	1000	–
Griechenland	400–800 1500–3400	Ohne Kaufzwang Eintausch altes gegen neues Auto

Foto: Zöpfl

Grafik: OÖN, APA

A Question Of Confidence



2010 European Year for Combating Poverty and Social Exclusion



κρήση, *krísi*

From Ancient Greek κρίσις (*krisis*, “a separating, power of distinguishing, decision, choice, election, judgment, dispute”)
< κρίνω (*krinō*, “I pick out, choose, decide, judge”)

Crisis bear solutions

„Back to the future“

(by John Debney, Alan Silvestri & Royal Scottish National Orchestra)



Crisis bear solutions

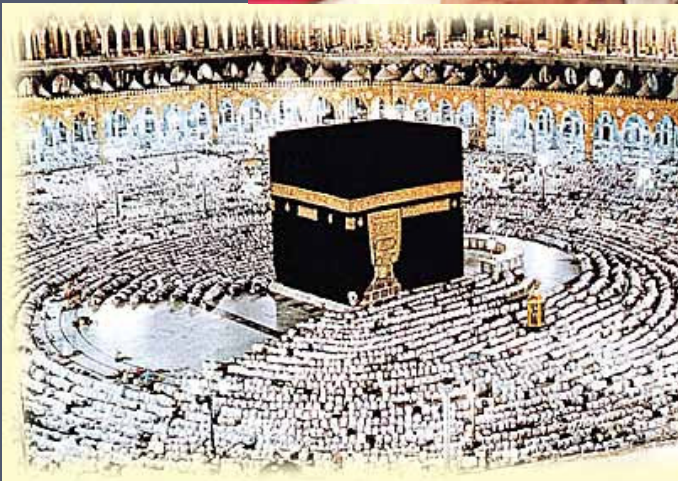
“An other brick in the wall”
(by Pink Floyd)



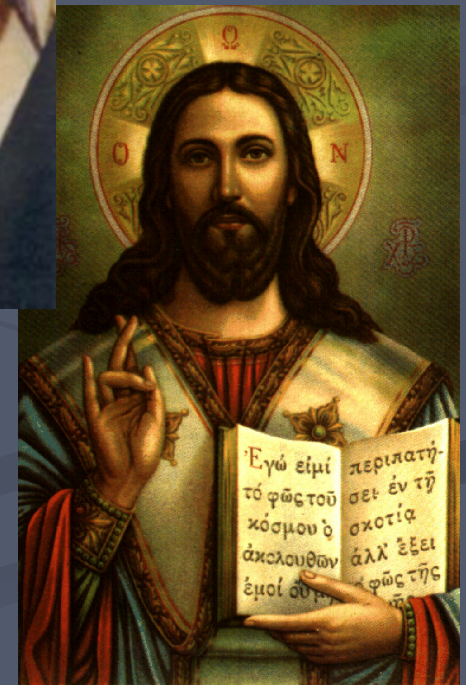
We need **global** social
We need social movements
movements



We need globally linked We need new communities communities



We need strong convictions and behavior



We need political leaders communicating beyond the borders



Caritas is able and willing to contribute as a church organization resolving the actual crisis.

Caritas an expert of crisis



Caritas an expert of crisis

The crisis was already existing among us.



Caritas an expert of crisis

We need to read the signs of the time.



Caritas an expert of crisis

- accepting our limits

« God chose what is low and despised in the world, what is regarded as nothing, to set aside what is regarded as something »
(1 Cor 1,28)

Caritas an expert of crisis

- community actions

«Then you will live in the land I gave to your fathers; you will be my people, and I will be your God . » (Ez 36,28)

Caritas an expert of crisis

- the excluded have to participate in our actions

« Terrors are turned loose on me; they drive away my honor like the wind, and like a cloud my deliverance has passed away.

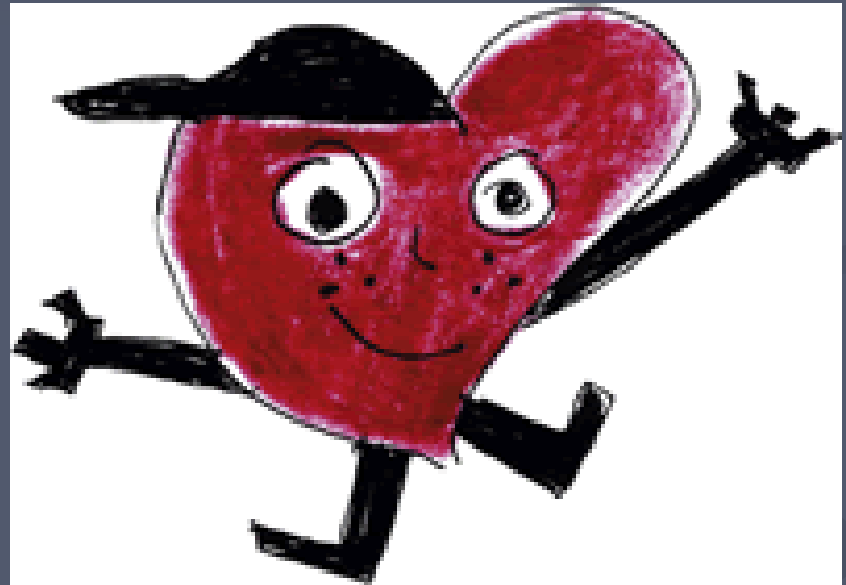
» (Job 30,15)

Caritas an expert of crisis

- to denounce injustices

« But all things being exposed by the light are made evident. » (Ep 5,13)

Thank you



SanPatignano.
A fruitful heart